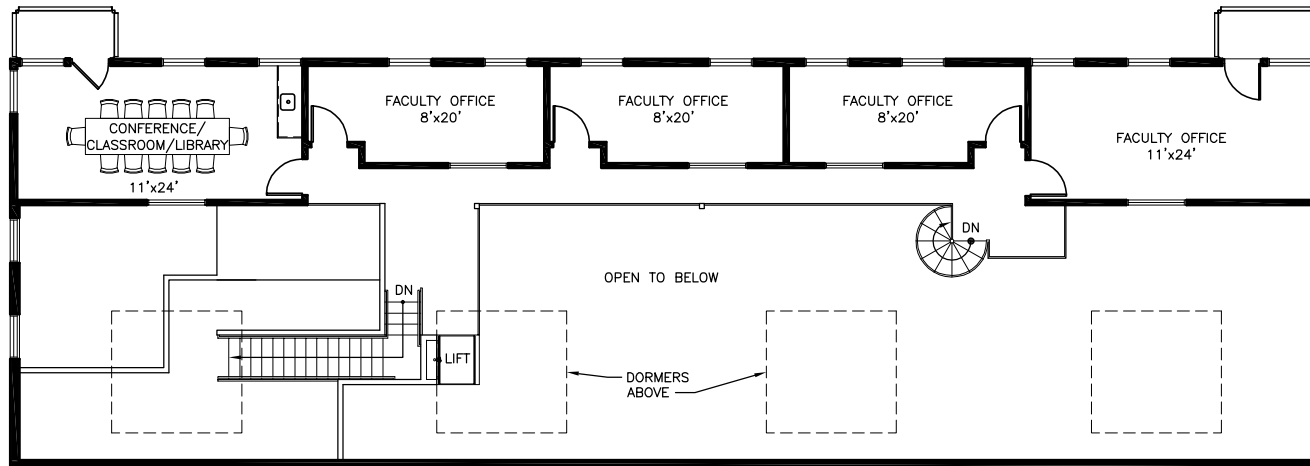


1 FLOOR PLAN

SC1 1/16"=1'-0"

■ WALLS - TERMINATE ● CEILING
□ WALLS - CAP ● 8'-0" A.F.F.



2 MEZZANINE PLAN

SC1 1/16"=1'-0"

THIS DRAWING IS THE PROPERTY OF PENNER & ASSOCIATES ARCHITECTS WHO CLAIMS PROPRIETARY RIGHTS IN THE MATERIAL DISCLOSED. IT IS ISSUED IN CONFIDENCE FOR DESIGN AND/OR CONSTRUCTION INFORMATION ONLY AND MAY NOT BE COPIED WITHOUT SPECIFIC WRITTEN PERMISSION FROM PENNER & ASSOCIATES ARCHITECTS.

PENNER & ASSOCIATES ARCHITECTS
ARCHITECTURE • PLANNING • DEVELOPMENT • INTERIORS
417 GETTYSBURG STREET PITTSBURGH, PA 15206 FAX 412-363-5315 412-363-5300

REVISION	PROJECT NUMBER	DATE
	...	11 OCTOBER 2007

PROPOSED INTERIORS FOR
UPMC NEUROMUSCULAR RESEARCH LAB
BUILDING #3, RIVERTech OFFICEWORKS
PITTSBURGH, PA

SC1